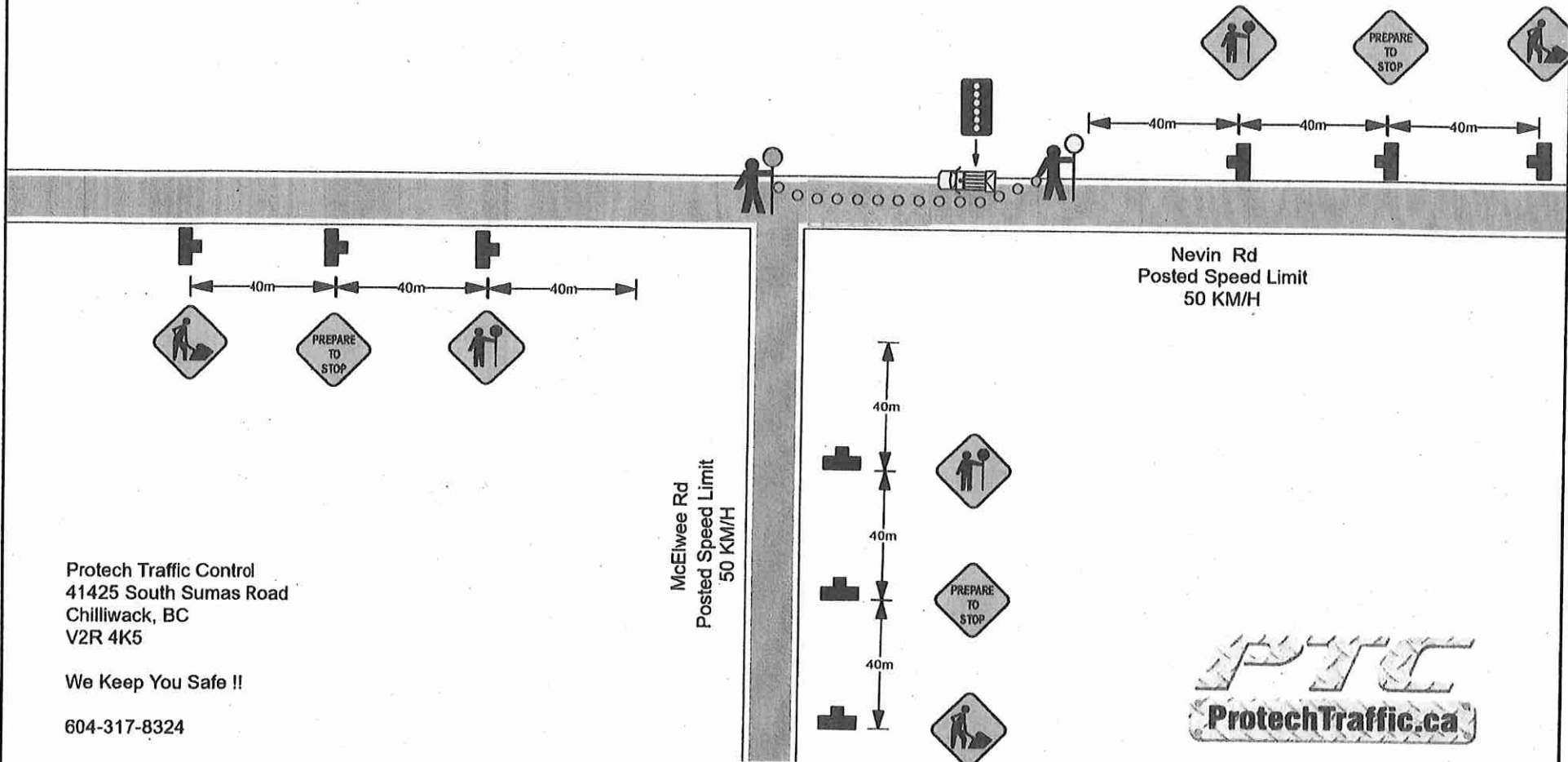
	Date: 7/24/2017 Author: LG Project: Walters Bulldozing 1994 ltd Nevin Rd, Chilliwack : TMP
	Comments: Mot Figure 7.8: Lane Closure with TCPs - Single Lane Alternating - Short and Long duration
	Tentative Schedule: July 25, 2017 - July 31, 2017 Tentative Time: 7am- 7pm

NOTE: Culvert Replacement will extend North -South across Nevin Rd, just East of the intersection. The project will be completed in two phases. Once the work extends half way across the road, the closure will be flipped to the other side to accommodate a travel lane for traffic.



Protech Traffic Control
 41425 South Sumas Road
 Chilliwack, BC
 V2R 4K5

We Keep You Safe !!

604-317-8324

McElwee Rd
 Posted Speed Limit
 50 KM/H

Nevin Rd
 Posted Speed Limit
 50 KM/H

